

CAVE Safety Cover – for inspection pits

Method Statement for Retraction and Deployment



Method Statement

for use of:
CAVE Safety Cover

Covers All Voids Easily



CAVE system in position over a vehicle inspection pit; protecting technicians and visitors from exposed void



CAVE covers are retracted onto the side walls of pit – leaving full space for work

Prevents anyone falling into a vehicle inspection pit in transport workshops

One person can retract or deploy the CAVE inspection pit cover. Working within the pit, there is no danger of falling into the pit while deploying the cover.

The CAVE safety cover is light-weight; it is easy and quick to deploy and retract.

NB for safety, a vehicle should ALWAYS be in place over an exposed the pit – however, this vehicle is omitted from many of these photos, to show the CAVE system more clearly

With thanks and acknowledgements to the Marshall Motor Group and their workshop team in Peterborough for providing the CAVE photographs on this page and facilities to take other photographs illustrating this method statement.



Customer Service

From the headquarters in Bicester near the M40 motorway, Oxford Safety Components Ltd provides full facilities for prompt delivery, supported by on-site and off-site training

The concept and design are protected by patents and patent applications in the UK and other countries

Oxford Safety Components Ltd

59, Murdock Road, Bicester, Oxfordshire, OX26 4PP

www.oxfordsafety.co.uk

Tel: 01869 32 32 82

CAVE MS / Iss 1a / 2 Jul 2008

page 1 of 4

CAVE Safety Cover – for inspection pits

Method Statement for Retraction and Deployment



Essential Safety Note:

The CAVE cover retraction **MUST** only be carried out while the vehicle is over the inspection pit to ensure that the pit is **protected at all times**; thus preventing any person from falling into the pit void.

- A) **The pit must be covered by the CAVE safety decking when no vehicle is over it.**
- B) **When a vehicle is over the pit, the void is protected by the vehicle length that covers the exposed part of the pit void.**
- C) **In the case of a short vehicle on a long pit, only open a CAVE section of not more than the length of the vehicle, and position the vehicle to leave no gap through which a fall can occur.**

For clarity: To make the method clear, most of the following illustrations do not show a vehicle in place. However, the above safety note **must always apply** in the real life situation in the workshop.

RETRACTION of the CAVE safety cover:

The initial situation: the CAVE cover is in position, deployed across the top of the pit to prevent falls.

1. A weekly inspection should be carried out and recorded by a competent person
2. Before use of the pit, make a visual check of the sections of CAVE decking. If any defects are seen – such as damage to the slats, fixings to the wall, levers or hinges – report the situation to a supervisor immediately. Assess how to continue with the safe use of the pit. Repairs must be arranged promptly.
3. If all is in order, a vehicle can be driven into position over the pit for inspection or service work. *Safety Note: Do not drive onto the CAVE lattices which are safety decks for personnel but are not designed to support the weight of a vehicle (or other equipment).*
4. Ensure that the wheels of the vehicle are on the solid workshop floor (and not on the lattice). To inspect the vehicle, gain safe access into the pit (the exact procedure here may vary where the pit access is different to that illustrated). *Safety Note: operation of the CAVE cover must only be carried out from inside the inspection pit; this is so that the operator is not at personal risk of falling into the pit.*
5. To access the underside of the vehicle, select a lattice section and raise one corner approximately 10 cm; this is achieved by using the vertical rod running through a vertical trunnion tube attached to the wall of the pit. Lift up the lever at the foot of the rod; this lifts the rod and corner of the lattice deck above. Rotate the lever so that it latches onto the elevation bracket.



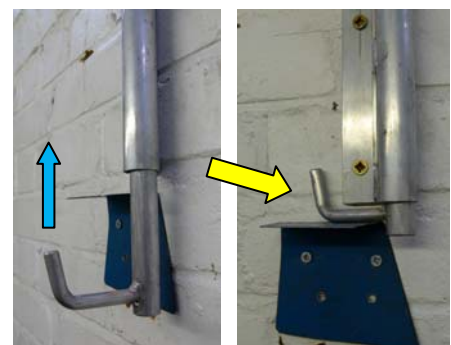
Point 2. Make a visual check of covers



Point 3. Drive vehicle into position



Point 5. Raise a corner



Point 5. Lift lever; rotate and latch lever

NB The vehicle must always be over the pit when the CAVE cover is retracted; for clarity, it is omitted in many of these photos

The concept and design are protected by patents and patent applications in the UK and other countries

CAVE Safety Cover – for inspection pits

Method Statement for Retraction and Deployment



6. Move to the second lattice section and grasp the handle (fitted below the decking). The slats are currently running across the pit at 90 degrees.

Fold the lattice horizontally sideways so that the slats become diagonal across the pit; the lattice will move underneath the corner of first lattice (already raised).

Safety note: Use the handle to prevent fingers from possibly becoming trapped between the slats.



Handle fitted to lattice (underneath)

7. Allow the lattice to hinge down – under its own weight – from horizontal plane to vertical. Allow the 2 rods supporting the lattice to slide down the trunnion tubes; the lattice will be lowered into the pit until it locates against the stop position; it will now hang against the pit wall.

8. Move back to the first lattice. Release the lever (latched as in point 5 above) and lower the lattice flat onto the workshop floor.

9. Now, for this first lattice, repeat the basic sequence in points 6 & 7 above.

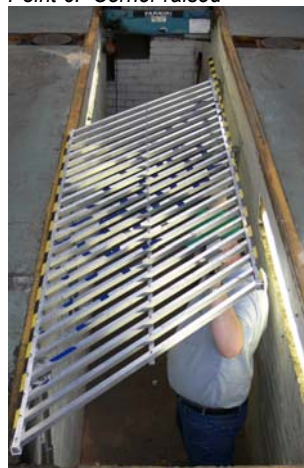
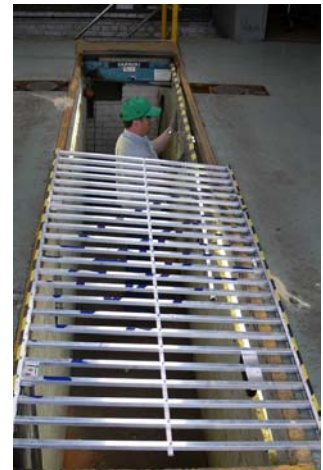
10. Thus the lattices are now hanging on the wall of the pit, below and clear of any pit jacking mechanism on traverse rails, leaving clear virtually the full working space within the pit, and giving full access to the underside of the vehicle.

11. The vehicle is now providing protection from falls into the pit. *Safety Note: if the of vehicle does not cover the length of the retracted CAVE cover(s), see essential safety note at start of this Method Statement, and take action accordingly.*

12. The vehicle may now be inspected or serviced.



Point 6. Corner raised



Point 9



Full access for vehicle work

NB The vehicle must always be over the pit when the CAVE cover is retracted; for clarity, it is omitted in many of these photos

The concept and design are protected by patents and patent applications in the UK and other countries

Oxford Safety Components Ltd

59, Murdock Road, Bicester, Oxfordshire, OX26 4PP

www.oxfordsafety.co.uk

Tel: 01869 32 32 82

CAVE MS / Iss 1a / 2 Jul 2008

page 3 of 4

CAVE Safety Cover – for inspection pits

Method Statement for Retraction and Deployment



DEPLOYMENT of the CAVE safety cover:

The initial situation: the CAVE cover is retracted and hanging down within the inspection pit. The vehicle is ready to be moved but **FIRST**, the CAVE safety decks must be deployed across the top of pit to prevent falls.

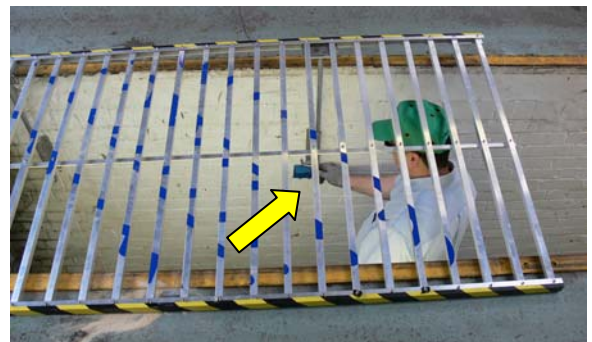
13. *Safety Note: operation of the CAVE cover must only be carried out from inside the inspection pit; this is so that the operator is not at personal risk of falling into the pit.*
14. Select a lattice, raise it upwards; the 2 rods supporting the lattice will slide upwards in the wall-mounted trunnion tubes.
15. Grasp the handle fitted below the lattice decking. Move the lattice on its hinges from the vertical plane to the horizontal. It can then be squared-up so that the slats run across the pit at 90 degrees with each side of the lattice resting securely on the workshop floor. *Safety note: Use the handle to prevent fingers from possibly becoming trapped between the slats.*
16. In order to be able to deploy the second lattice section, the first lattice must be raised at one corner approximately 10 cm; this is achieved by using the vertical rod running through the vertical trunnion tube. Lift up the lever at the foot of the rod; this lifts the rod and corner of the lattice deck above. Rotate the lever so that it latches onto the elevation bracket.
17. Move to the second lattice and repeat the sequence of moves in points 14 & 15 above. The lattice will move horizontally underneath the corner of the first lattice (already raised).
18. Move back to the first lattice. Release the lever (latched as in point 16 above) and lower the lattice flat onto the floor of the workshop.
19. The 2 lattices are now deployed across the pit void, each fixed in place and resting firmly on the workshop floor. Thus, the CAVE lattice covers provide a firm safety deck to prevent any falls into the pit by technicians, operatives or visitors.
20. The vehicle may now be removed from above the pit. *Safety Note: Do not drive onto the CAVE lattices which are safety decks for personnel but are not designed to support the weight of a vehicle (or other equipment).*



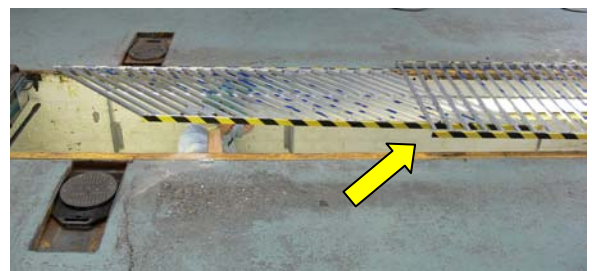
Point 14. Raising lattice upwards



Point 15. Hinging lattice into horizontal plane



Point 16. Raising corner of lattice



Point 17. Moving second lattice underneath first lattice



Point 20. Vehicle may now be moved from above the pit

NB The vehicle must always be over the pit when the CAVE cover is retracted; for clarity, it is omitted in many of these photos

The concept and design are protected by patents and patent applications in the UK and other countries